

# On the Edge

December 2024  
Issue 12

## Hot Dog Moment

By: Pastor White

### “GIVE LOVE ON CHRISTMAS DAY”

1 Corinthians 13:11-13

“Give Love on Christmas Day” is a heartfelt song that highlights the true spirit of Christmas—giving love and kindness over material gifts. The Jackson 5 sung this song with power and grace. It emphasizes the power of compassion and the joy of making others feel valued and cared for during the holiday season. The song serves as a reminder that love is the most meaningful gift we can share, especially with those who may feel overlooked or alone. This particular song reminds us that love benefits others. So this

Christmas Day Give LOVE!

Hot dog



### Pastor's Contact

Rev. Willie White Jr.

334-701-5853

[williewhite203@gmail.com](mailto:williewhite203@gmail.com)

### Church Contact Info:

Johns Chapel AME Church

605 Geneva Highway

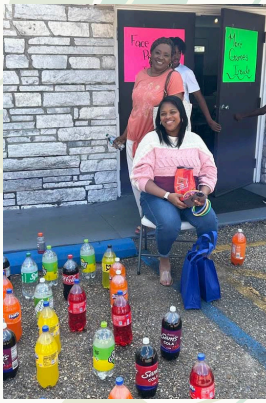
Enterprise, Alabama 36330

[www.johnschapelamec.org](http://www.johnschapelamec.org)

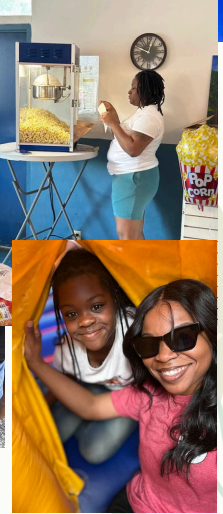
Galatians 4:4-5:

"But when the set time had fully come, God sent his son, born of a woman, born under the law, to redeem those under the law, that we might receive adoption to sonship."

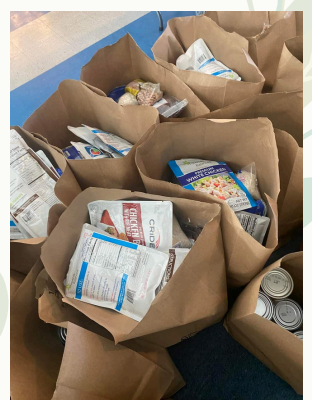
# R.A.Y.A.C. did it again and hosted an excellent Fall Festival!



Thank you to  
Five Star  
Credit Union  
for  
sponsoring  
the prize  
table!



The feeding of the 300 was EPIC. Thank you to our partners; we were able to have 300 bags packed with non-perishable items.  
We also had a Pre-Thanksgiving meal that was sponsored by the Johns Chapel AME Church Sons of Allen.



# We Salute all Veterans



SFC Joshua Hakes and  
Pastor Willie White

On November 17, 2024 SFC Joshua Hakes did an excellent job saluting our veterans. He gave a resounding message and testimony about wearing the "Armor of God". He spoke about being a part of God's army first and how God's guidance helped him get through some very tough situations on the battlefield. To God be the Glory for his dedication to service.

Ephesians 6:10-18 The Armor of God

## Bible Christmas Trivia

Continue to Pray  
for the Sick and  
Shut-in and  
those going  
through  
bereavement!



1. What are the five names of Jesus found in the Bible?
2. What does the name Emmanuel mean?
3. Which city did Mary and Joseph travel to for the census?

# Every Sunday is Super Bowl Sunday at Johns Chapel AME Church



## Trivia Answers

1. Jesus, Emmanuel, Christ, the Mighty God, the Prince of Peace
2. "God with us."
3. 3.Bethlehem.

## Come Worship with Us!

Virtual, In Person, or Limited Range Radio  
87.9 FM

Breakfast From Heaven  
Each Sunday at 8:00 a.m.

Sunday School  
Each Sunday at 9:00 a.m.

Morning Worship  
Each Sunday at 10:45 a.m.

Weekly Bible Study  
Each Wednesday at 6:00 p.m. in Person

Late Night Devotion  
Facebook at 10:00p.m.

For more details about our services and how to join via Zoom, Facebook Live, or YouTube, please visit our website.  
[www.johnschapelamec.org](http://www.johnschapelamec.org)

**"Have yourself a merry little Christmas.  
Let your heart be light."**

## Ways to Give

**Tithes and Offerings for Kingdom  
Building**

**Via mail**

**Johns Chapel AME Church  
P.O. Box 311015, Enterprise AL. 36331**

**Givelify**

**Johns Chapel AME Church**

**PayPal**

**Johns Chapel African Methodist  
Church**

**Cashapp**

**\$jcamec605**